



**JANATICS**  
Pneumatic

Marketing Offices



**Contact**

**JANATICS INDIA PRIVATE LIMITED**

Registered Office:  
E-25, SIDCO Industrial Estate, Kurichi,  
Coimbatore - 641 021, INDIA.

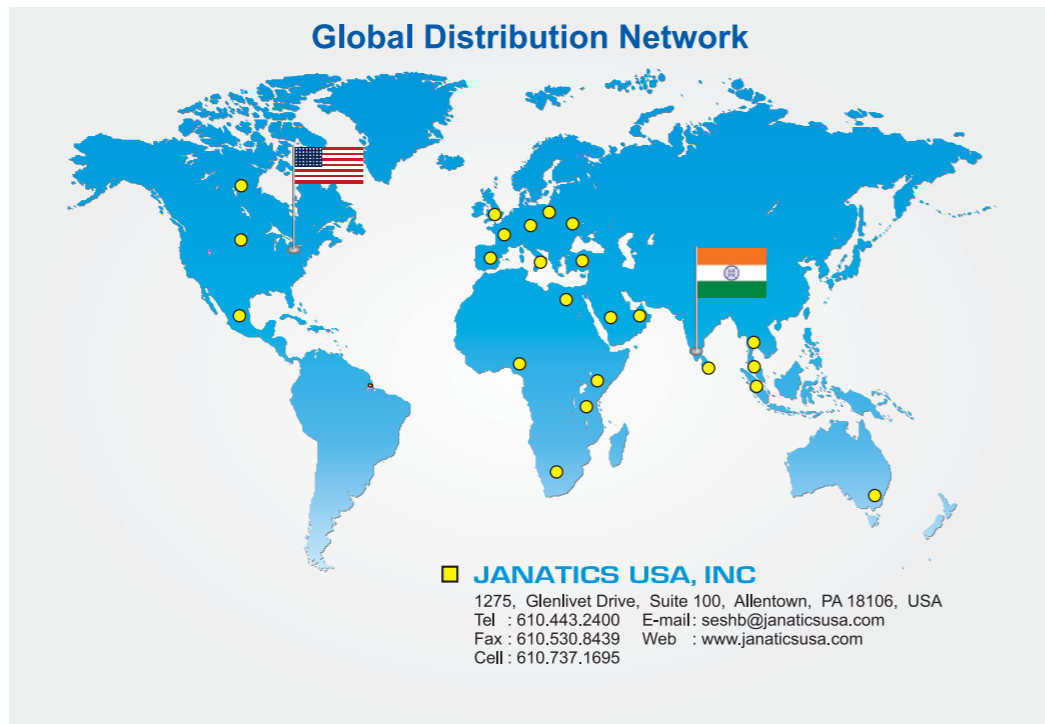
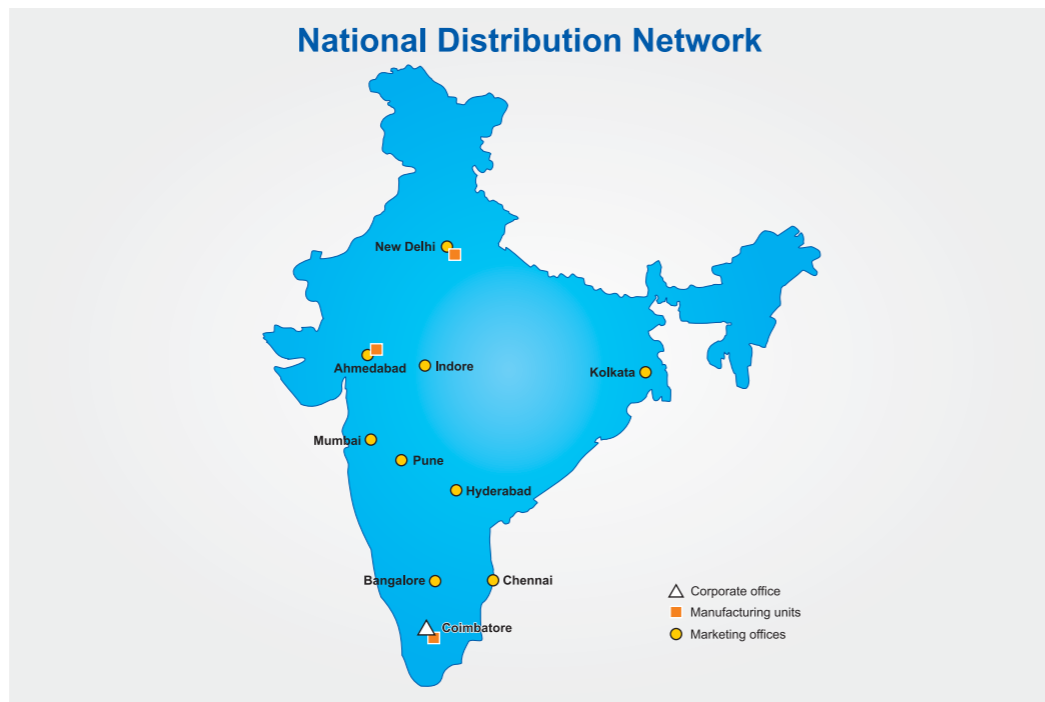
Works:  
SF No. 252/1B1, Bodipalayam,  
Seerapalayam Village, Madukkarai Post,  
Coimbatore - 641 105, INDIA.

Tel : +91 422 2678500  
Fax : +91 422 2672304  
E-mail: janatics\_ho@janatics.co.in  
Web : www.janatics.com

Subject to change



**JANATICS**  
Pneumatic



Wide Range of Products



Air Cylinders



Air Preparation Units



Directional Control Valves



One Touch Fittings

**PRODUCT CATALOGUE**



# JANATICS Pneumatic

Our entire data and workflow systems work on an integrated high end IT software and hardware backbone.

## Information Technology

## Complete range of Didactic Products... for a World Class Mechatronics Lab

# JANATICS Pneumatic

- Suitable for Engineering colleges / Polytechnics and Industries
- Kits prepared as per DTE curriculum
- Kits available in various modules
  1. Pneumatic trainer kits
  2. Electropneumatic trainer kit
  3. Electropneumatic trainer kit with PLC
- Training Aids - JASP 4.0, Cut section models and Wall posters

## Pneumatic Trainer Kit



- Leading manufacturer of pneumatic products in India
- Located in Coimbatore, one of the most industrialized cities in India
- An ISO 9001:2008 & ISO 14001:2015 & 45001:2018 certified company
- Established in the year of 1977 - over 4 decades of service to the Industries
- Has a built in area of 70000 sq. mts.
- Professionally managed
- The company runs on ORACLE ERP system. (E-Business suite)
- R&D division approved by the Department of Science & Industrial Research (DSIR), Government of India
- In house Tool room facility for manufacturing the moulds and dies for castings, engineering plastic components and sheet metal components
- Wide sales and service network with 15 marketing offices and 90 stockist in all over India
- Exports to over 25 countries, which includes UK, USA, Mexico, Germany, Australia, Kuwait, South Africa, Italy, Saudi Arabia, Kenya, Egypt etc
- Continuous participation in International trade fairs
- MESSE (Hannover-Germany), INDEE (Malaysia, Indonesia, Thailand), Fluid Trans Compomac (Milano-Italy), Fluid Power Show (Chicago-USA), PTC (Shanghai), etc.
- Member of following professional bodies
  - Confederation of Indian Industry (CII)
  - CODISSIA
  - Indo-German Chamber of Commerce
  - Fluid Power Society of India

**ISO Standard Cylinders**  
Double Acting (A27-Magnetic, A28-Non Magnetic)

- Conforms to ISO 15552 / VDMA 24562 standards
- Bore sizes: Ø32, 40, 50, 63, 80, 100 & 125 mm
- Standard strokes up to 500 mm, longer strokes on request
- Adjustable cushioning at both ends
- Wide varieties of standard mountings & accessories
- Double ended cylinders - Series A25, A26

**Square Cylinders**  
Double Acting (A23-Magnetic, A24-Non Magnetic)

- Conforms to VDMA 24562 standards
- Bore sizes: Ø32, 40, 50, 63, 80, 100 & 125 mm
- Standard strokes up to 500 mm, longer strokes on request
- Adjustable cushioning at both ends
- Wide varieties of standard mountings & accessories
- Double ended cylinders - Series A20, A21

**Miniature Cylinders**  
Double Acting (A51-Non Magnetic, A52-Magnetic)

- Conforms to ISO 6432 and CETOP standards
- Bore sizes: Ø12, 16, 20 and 25 mm
- Elastomer cushion pad at both ends
- Wide varieties of standard mountings & accessories
- Reed switches & Clamps for magnetic cylinders
- Double ended cylinders - Series A53, A54

**Compact ISO Cylinders**  
Double Acting (A64-Non Magnetic, A63-Magnetic)

- Conforms to ISO 21287 standards
- Bore sizes: Ø25, 32, 40, 50, 63, 80 & 100 mm
- Reed switches for magnetic cylinders
- Elastomer cushion pad at both ends
- Wide varieties of standard mountings & accessories
- Double ended cylinder - Series A60, A61

**Air Preparation Units**  
FRL series

- Air Filters, Regulators, Lubricators
- Filter-Regulator Combination units
- FRL Modular units for easy maintenance
- G1/4, G3/8, G1/2, G3/4 and G1 sizes
- Accessories: Wall and Panel mounting brackets, Connecting nipples and Pressure gauges
- Automatic drain (internal & external)
- Precision Regulators G1/8, G1/4, G1/2

**Compact Valves**  
Series DS2 - G1/8", G1/4", G1/2"

- 3/2 NO, NC & 5/2 external pilot operated, single and double solenoid operated versions
- 5/3 external pilot operated & double solenoid operated spring centered versions
- Suitable for manifold mounting
- Wide range of manifolds available
- Wide range of coil voltages
- Solenoid connectors conforms to DIN 43650 standards (Series KA, KB, KC)

**Manually Operated Valves**  
Series DS2 - G1/8", G1/4", G1/2"

- 3/2, 5/2 Hand lever and Push pull versions
- 5/3 Hand lever spring centered versions
- Suitable for panel mounting
- Mounting provision for individual unit

**Solenoid Valves**  
Series J

- 2/2, 3/2 and 5/2 valves
- Direct and pilot operated valves
- G1/4 and G1/2 sizes
- Pressure upto 10 bar
- AC / DC coils
- Wide range of standard coil voltages
- Coils suitable for DIN connectors

**Manual & Mechanical Valves**  
Series DP - M5, G1/4"

- 3/2 NO, NC & 5/2 versions
- Poppet seating arrangement
- No exhaust overlap
- Basic, Roller lever, Idle return roller lever, Foot operated valve with Lock, Finger lever and Hand lever versions available



Pressure die casting is an important process for manufacturing high volume components.

**Pressure Die Casting Unit**



**Works**



**Airline Valves**  
Sizes : M5, 1/8", 1/4", 3/8", 1/2"

- Flow control valves (Series - GR)
- Inline slide valves (Series - GS)
- Non return valves (Series - GV)



**One Touch Fittings**  
Series WP2

- More than 300 models
- Suitable for Nylon, PU tubings
- Available in sizes of 4, 6, 8, 10, 12, 14 and 16 mm OD tubings
- Fast and instant connection / removal of tubes
- Bubble tight sealing
- Straight L, Y, T and many configurations

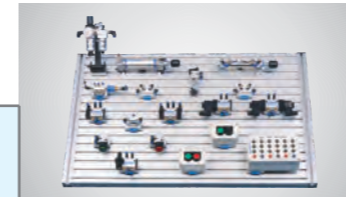


**Coloured Polyurethane Tube** (Series WH)

- Provide differentiation of air line in pneumatic circuits
- Available in colours of Blue, Silver, Transparent, Red, Black and Yellow
- Available in sizes of Ø4, 6, 8, 10, 12, 14 and 16mm OD tubings

**Polyurethane Coiled Tube** (Series WHC)

- Self retracting & space saving
- Available in colours of Blue, Silver gray, Red, Black and Yellow
- Available in sizes of Ø4, 6, 8, 10 and 12mm OD tubings



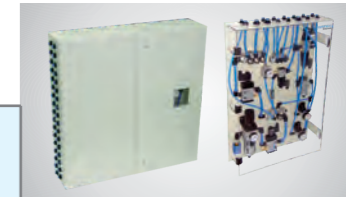
**Pneumatic Trainer Kit**  
Series JTK

- Suitable for Engineering colleges / Polytechnics & Industries
- Prepared as per DTE curriculum
- Available in 3 variants: 1. Basic pneumatic trainer kit, 2. Electropneumatic trainer kit, 3. Electropneumatic trainer kit with PLC
- All the models are upgradable
- Training Aids - Janatics Animation Software for Pneumatics, Cut section models, Magnetic Symbols and Wall Posters



**Cylinders**

- Miniature cylinders Ø25 with adjustable cushioning
- Series A12, A13, A23, A24 Cylinders with bellows
- A12, A13 Cylinders with Viton seals on request
- Cylinders with stainless steel piston rod available for special applications
- Multi position cylinders available on series A63, A64
- Cylinder Ø250 & 320mm available



**Pneumatic Systems**  
(Cabinets and Panels)

- Easy and fast commissioning
- Fully wired
- Guaranteed operational reliability
- Complete turnkey solution
- Makes repeat ordering easy
- Custom build systems
- Reserve positions to allow expansion



**Quick Exhaust Valve**  
Series GQ

- Sizes M5, G1/8, G1/4, G3/8, G1/2
- Type GQ01 series is with silencer to reduce the exhaust noise
- Increase the speed of the cylinder
- With / without silencer



**Quick Couplers**  
Series WQ

- Sizes: M5, 1/8, 1/4, 3/8, 1/2
- Nickel plated brass body
- High flow characteristics
- Wide range of models
- Maintenance free and long life
- Compact size
- Attractive design
- Teflon pre-coated male taper threads



**Junction Box**  
Series WN

- Sizes: M5, 1/8, 1/4, 3/8, 1/2
- Aluminium anodized body
- Mounting holes provided
- Wide range of models available



**Rotary Slide Valve**  
G1/4" & G1/2"

- Easy handle movement and precise control of the direction
- Compact and lightweight design
- 4/3 Mid-position blocked type design, Detended centre position
- Handle position available in two types
- Both body mounting and Panel mounting is possible
- Good flow characteristics



**ISO Sub base valve - Size 1**  
5/2 way

- Mounting interface suitable for ISO 5599-1
- Manual override
- Wide range of coil voltages
- Optional: High temperature 150° C max. (Viton seals)



**ISO Sub base valve - Size 3**  
5/3 way

- Mounting interface suitable for ISO 5599-1
- Manual override
- Wide range of coil voltages



**Nipples**  
Series WN

- Wide range available
- Nickel plated brass body
- Male (R) threads with thread sealant coating
- Male parallel threads with sealing washer (M5 only)
- Wide variety of nipples available



**Pressure Switch**  
Series PW

- PNP and NPN versions available
- Easy pressure setting
- LED indication while system pressure is above set pressure
- Direct mounting facility



**Digital Pressure Sensor**  
Series PS

- PNP & NPN versions available
- Easy and precise pressure setting
- LED indication while system pressure is above set pressure
- Direct and panel mounting facility
- Digital readout of pressure value
- Two digital output and one Analog output
- Selectable set pressure units (Mpa, psi, kgf/cm2, bar)



**Pressure Switch**  
G1/4"

- Suitable for DIN 43650 connector
- Variants available with Integrated LED for switching status indication
- Robust design
- Power supply voltage 12, 24, 60, 110, 220V AC / DC (PT11N1...), 24V AC / DC (PT11N2...)



**Shock Absorber**

- Stroke - 4, 6, 7, 10, 12, 15, 25 mm
- Smooth and Quick deceleration characteristics
- Shock absorber resistance will be self-adjusted against the applied load
- Full threaded body design enhances heat dissipation & gives flexibility over fine adjustment
- High energy absorption characteristics & robust design gives longer life
- Higher usage frequency and smaller installation length

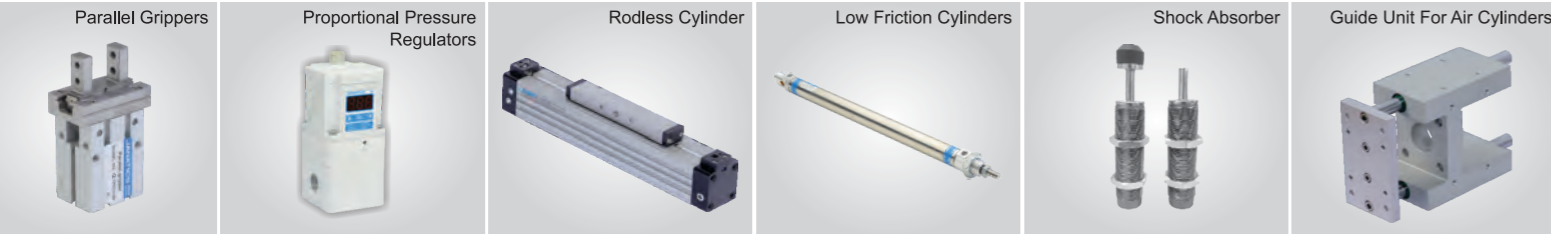


**Air Tank (Stainless Steel)**

- 0.75, 2, 5, 10, 20 L
- Attractive and clean design
- Available with drain ports
- SS304 material for corrosion resistance

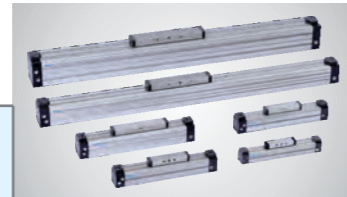
**New Products**

**Applications**



**Compact Guided Cylinder**  
Ø12mm to Ø63 mm

- For ease of loading & unloading workpiece at restriction
- High speed operation: 0.2 sec/stroke
- Compact cylinders with strong clamping force, Ø12 to 63mm
- Body machined from extruded aluminium that mounts directly to equipment for rigid, secure mounting in small space
- Compact equipment design is possible. Suited for electronic parts inspection clamps. Ideal for use in small mounting space
- Adjustable stroke on request



**Rodless Cylinder**  
Ø18, Ø25, Ø32, Ø40, Ø50 mm

- High strength aluminium extrusion
- Front and side wipers for yoke
- With magnetic piston for position sensing
- Adjustable cushioning at both ends
- Piston Ø18, Ø25, Ø32, Ø40, Ø50 mm
- Air connection can be given in any one of the four directions
- Inlet & outlet air connection at one end possible



**Parallel Grippers**  
Ø10, 16, 20, 25, 32, 40 mm

- Hard anodised body
- Either internal or external holding possible
- Compact design
- Magnetic sensing as standard



**Proportional Pressure Regulator**  
G1/4" & G1/2"

- LED display for monitoring output pressure
- Fast response
- High flow rate
- Output pressure is maintained in the event of power loss
- IP65 class protection
- Compact and lightweight
- Suitable for standalone and modular mounting
- Straight and right angle cable options available
- Port size G1/4", G3/8", G1/2"



**Air Filter With Service Indicator**  
G3/8"

- Conforms to ISO 5782-1
- Suitable for Modular mounting
- Steel bowl guard, bayonet type
- Press type Manual drain for easy operation
- Bronze filtering element
- Separator and shield for efficient moisture separation
- Service indicator turns from green to red when filter element needs to be replaced ( $\Delta p > 1$  bar)



**Air Filter With Service Indicator**  
G1/2", G3/4", G1"

- Conforms to ISO 5782-1
- Suitable for Modular mounting
- Steel bowl guard, bayonet type on F15 & F17 models
- Press type Manual drain for easy operation
- Bronze filtering element
- Separator and shield for efficient moisture separation
- Differential pressure gauge are used for indicating the servicing life of filter element
- Needle position: Green - Clean, Yellow - Change, Red - Dirty



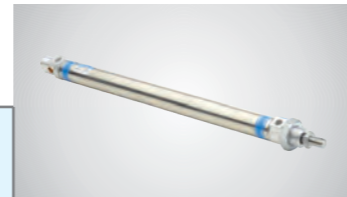
**Double Acting Cylinders**  
(Compact ISO type) - Ø25 to 100 mm

- Elastomer end cushioning
- Wide varieties of mountings
- Space saving
- Magnetic and Non magnetic version
- Aluminium profile (square) cylinder barrel
- Magnetic sensor common for all sizes (Refer Magnetic sensor catalogue)
- Optional: High temperature (Viton seals) 150°C max. (only applicable for high temperature series)



**Non Rotating Piston Rod Cylinder**  
Ø32 - 63 mm - As per ISO 15552 / VDMA 24562 standards

- Double Acting Cylinders
- Hexagonal piston rod for non-rotation
- Adjustable cushioning at both ends with elastomer pads
- Wide varieties of mountings as per ISO 15552 / VDMA 24562 standards
- Magnetic and Non magnetic version
- Aluminium profile (square) cylinder barrel
- Magnetic sensor common for all sizes (Refer Magnetic sensor catalogue)
- Piston rod - Non rusting stainless steel material



**Low Friction Cylinders - Double Acting**  
Ø25mm - (As per ISO 6432 / CETOP RP52P standards)

- The special seal reduce the wear during the operations
- Lower Response Pressure
- Low friction
- Long life
- Wide varieties of mountings



**One Touch Fittings (Metal)**  
Series WM5 - 1/8", 1/4", 3/8", 1/2"

- Attractive design
- Threaded nipples of Male Elbow fittings enable to turn by 360°
- Full area of the inner bore of the tubing is available for flow of fluid
- Stainless steel design ensures superior clamping by bubble tight sealing of various tubes
- Suitable for different materials of tubing - Nylon (Polyamide), Soft Nylon, Polyurethane, Polyethylene
- Easy and quick push-in connection of tube / easy removal of tube by simple pressing of collet cap
- Maintenance free and long life
- Short parallel thread connection



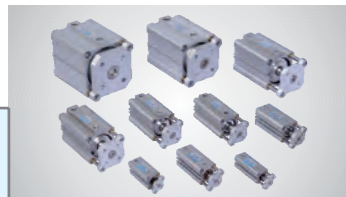
**Cylinder with Through Hole Piston Rod**  
Series A85

- Usable for Pet moulding
- Both ends with elastomer pads
- Non-magnetic version
- Piston rod with hard chrome plating
- Optional: Round barrel with Tie rod



**High Pressure Valve**  
G1/2"

- High usage for Pet Moulding
- High pressure range - 20 bar
- Mounting provision for individual unit
- Compact in size
- Wide range of coil voltages



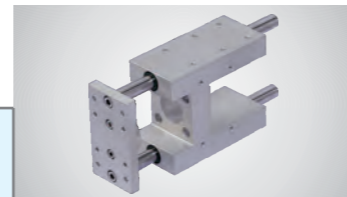
**Compact Cylinder with Guide Rod**  
Double Acting - Ø12mm to 100mm

- Compact, lightweight and space saving design
- Large clamping force in relation to their size
- Low friction, long life seal design
- Elastomer end cushion
- Load can be directly mounted
- A guide rod is installed to improve lateral load resistance
- Non-Rotating accuracy ±0.3° (or) less



**Guide Unit For Air Cylinders**  
As per ISO 15552 / VDMA 24562 standards

- Suitable for cylinder series A23, A24, A27, A28
- Three variants available (Plain bush bearing, Ball bearing)
- Double lip seal provided with Plain bush bearing & Recirculating ball bearing version helps retain lubrication
- Flange mounting available



**Guide Unit For Air Cylinders**  
As per ISO 6432 / CETOP RP52P standards

- Suitable for Cylinder series A51, A52, A55, A56
- Two variants available (Plain bush bearing, Ball bearing)
- Double lip seal provided with Plain & Recirculating ball bearing version helps retain lubrication



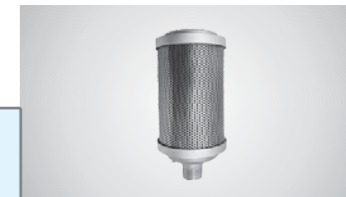
**Dual Pressure Valve**  
G1/2"

- High usage for Pet Moulding
- High pressure range - Max. 25 bar
- Mounting provision for individual unit
- Compact in size
- Wide range of coil voltages



**High Pressure Regulator**  
G1/2"

- High usage of Pet moulding
- High pressure range upto 30 bar
- Compact easy to service



**High Pressure Silencer**  
G1/2", G3/4", G1"

- Maximum of 35 dB noise reduction
- Provided with Hex head, making it easy for assembly
- Exhaust air flows softly to atmosphere
- Maintenance free and prolonged service life